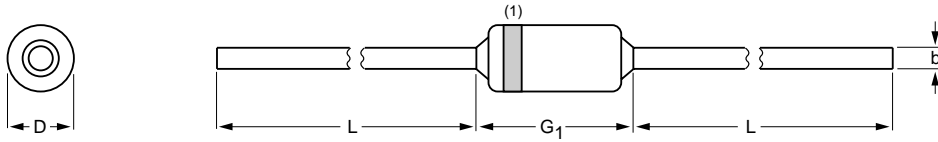


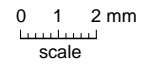
Hermetically sealed glass package; axial leaded; 2 leads

SOD27



**DIMENSIONS** (mm are the original dimensions)

UNIT	b max.	D max.	G <sub>1</sub> max.	L min.
mm	0.56	1.85	4.25	25.4



**Note**

1. The marking band indicates the cathode.

OUTLINE VERSION	REFERENCES				EUROPEAN PROJECTION	ISSUE DATE
	IEC	JEDEC	JEITA			
SOD27	A24	DO-35	SC-40			97-06-09 05-12-22